



GAT MONTHLY MEMBERSHIP PROGRESS REPORT

Results as of: 6/30/2023

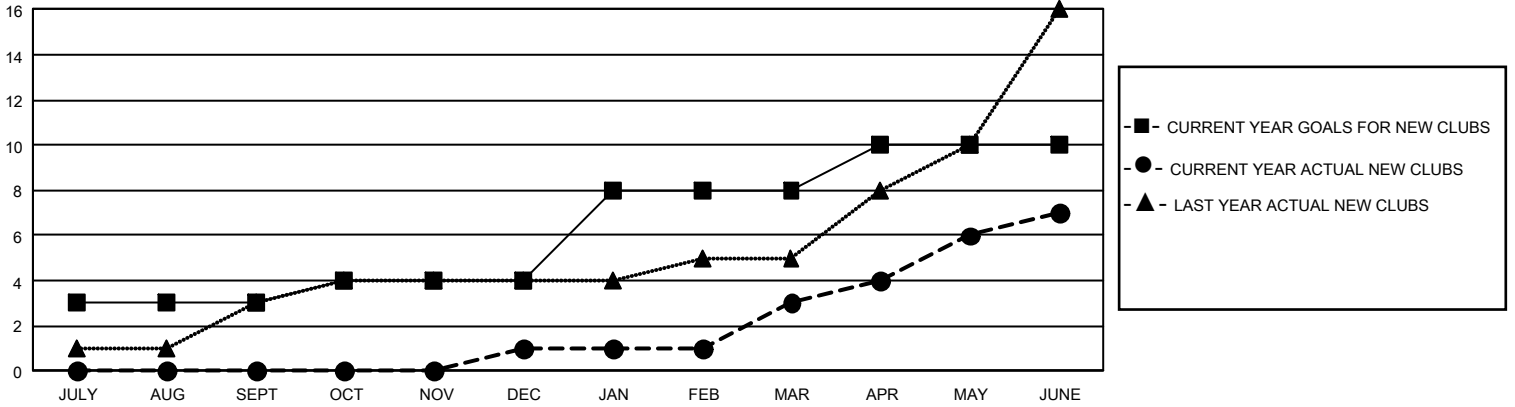
GMT Constitutional Area 3, Group J

REPORT DOES NOT INCLUDE CLUBS IN UNDISTRICTED AREAS.

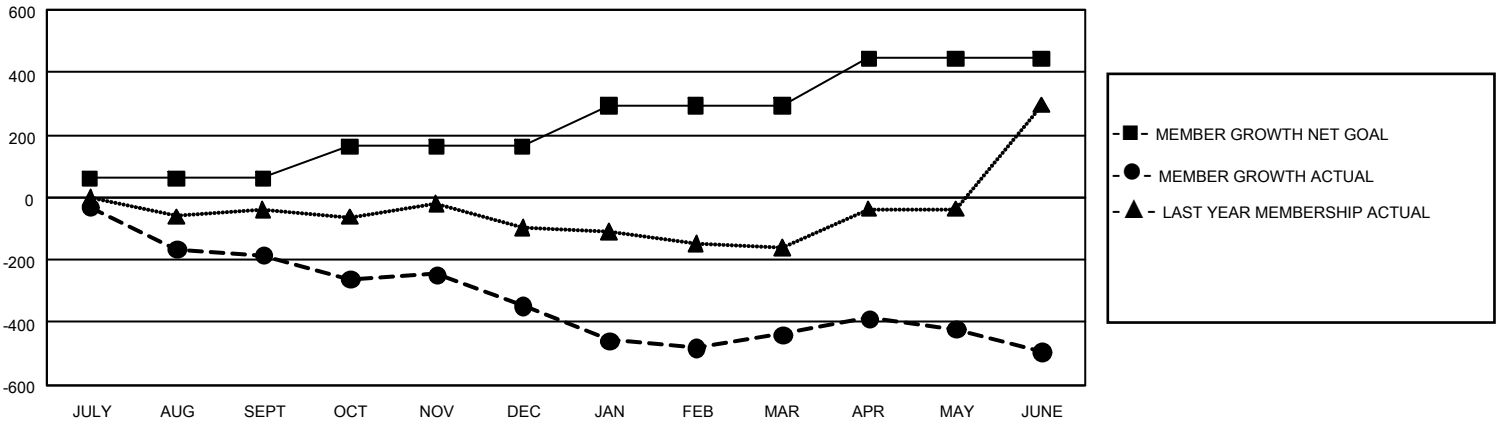
Clubs			
RESULTS FOR 2022-2023			
QUARTER	NEW CLUB GOAL	NEW CLUBS	DROPPED CLUBS
JULY/AUG/SEPT	9	0	3
OCT/NOV/DEC	3	1	2
JAN/FEB/MAR	12	2	4
APR/MAY/JUNE	6	4	4

Members			
RESULTS FOR 2022-2023			
QUARTER	MEMBER GROWTH NET GOAL	MEMBER GROWTH ACTUAL	DROPPED MEMBERS ACTUAL (including transfers)
JULY/AUG/SEPT	60	104	271
OCT/NOV/DEC	103	230	324
JAN/FEB/MAR	130	164	249
APR/MAY/JUNE	151	377	411

GOALS AND ACTUAL NEW CLUBS CUMULATIVE



GOALS AND ACTUAL MEMBERS CUMULATIVE



DROPPED CLUBS: 13	
DROPPED MEMBERS	
DECEASED	49
CLUB CANCELLED	260
OTHER	946
TOTAL	1,255

125 CLUBS OF 213 ADDED 1 OR MORE NEW MEMBERS

[CLICK HERE FOR CUMULATIVE MEMBERSHIP DATA](#)

GENDER DISTRIBUTION	
MALE	2,837 (54.91%)
FEMALE	2,328 (45.06%)
NON BINARY	1 (0.02%)
PREFER NOT TO ANSWER	1 (0.02%)
TOTAL FAMILY UNIT MEMBERS	2,245
FAMILY MEMBERS PAYING HALF DUES	1,188